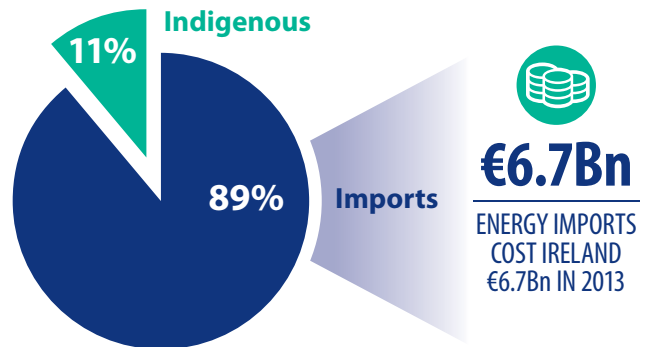
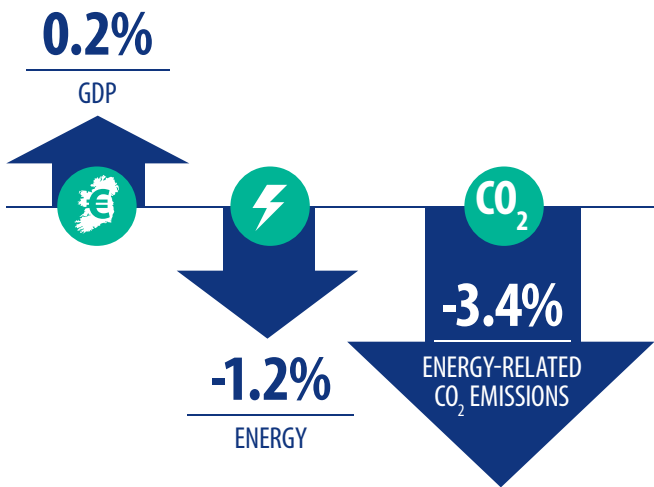


Energy in Ireland 2013 – Highlights

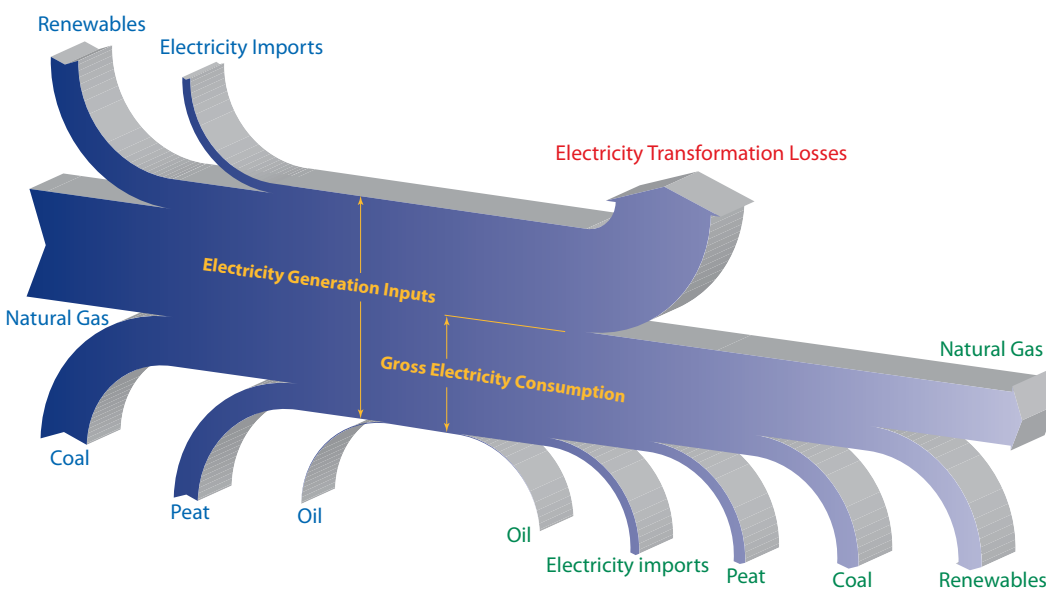
Ireland's Economy, Energy Supply and Emissions

In 2013, the economy grew slightly while energy supply and emissions declined, however Ireland still has one of the highest energy import dependencies in Europe.



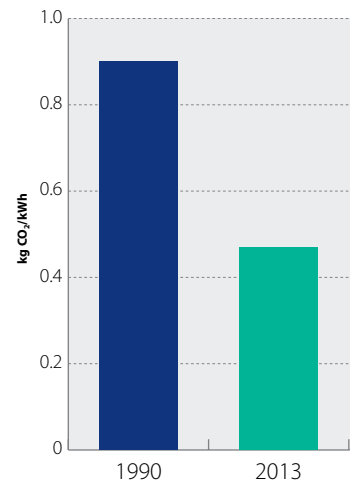
Electricity: Fuel Mix and Carbon Intensity

Losses in electricity generation, primarily from gas, coal and peat plants represent 46% of the energy inputs. Renewable sources such as wind and hydro do not have transformation losses. Carbon emissions per unit of electricity generated in Ireland are just over half of what they were a quarter of a century ago, possibly the lowest they have ever been.



CO₂ EMISSIONS PER UNIT OF ELECTRICITY GENERATION

0.896 kgCO ₂ /kWh	0.469 kgCO ₂ /kWh
IN 1990	IN 2013



Progress to 2020 Renewable Targets



50%

IRELAND IS ON AVERAGE
HALF WAY TOWARDS ITS
2020 RENEWABLES TARGETS



21%

ELECTRICITY

2020 TARGET **40%**



5.7%

HEAT

2020 TARGET **12%**



4.9%

TRANSPORT

2020 TARGET **10%**



Energy Use Changes by Sector

As the economy recovers so too energy use in most sectors has grown, up 1.1% across the economy. However efficiency improvements in electricity generation mean that overall primary energy fell by 1.2%



2.5%

TRANSPORT



1.2%

INDUSTRY



1.3%

DOMESTIC



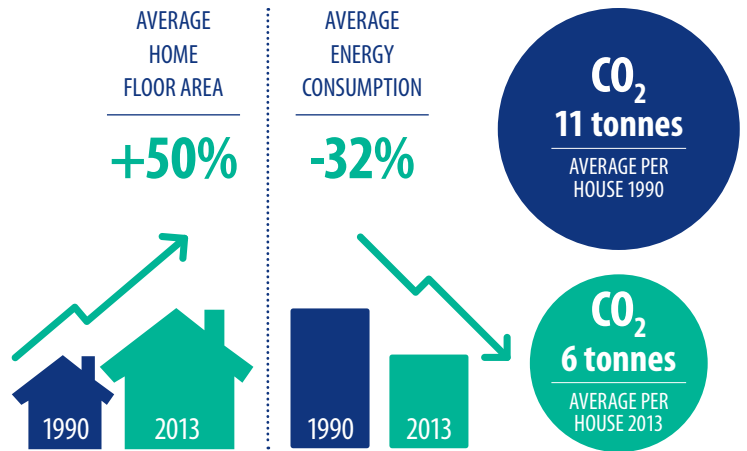
COMMERCIAL

2.4%

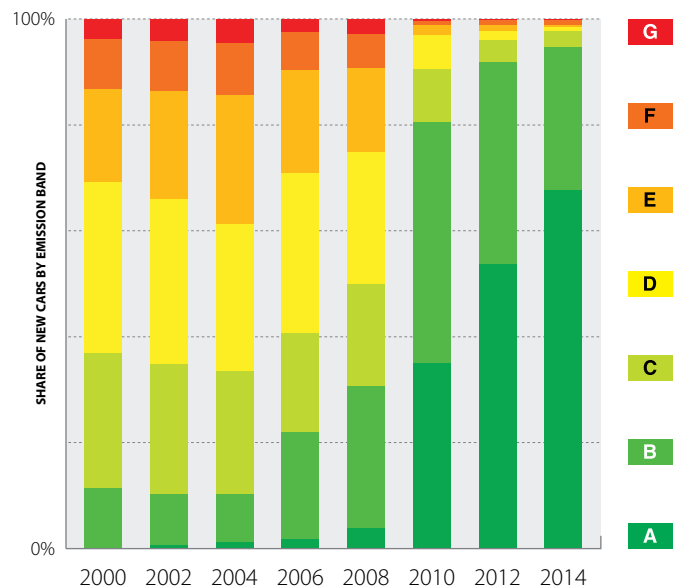


Policy Achievements

Improved building energy regulations and the success of Building Energy Rating and the Better Energy programmes have significantly improved residential efficiency.



The introduction of emission based car taxation has resulted in a transformation in new car purchase patterns and a 27% reduction in average new car emissions since 2007.



**Sustainable Energy Authority of Ireland
Energy Policy Statistical Support Unit**
Building 2100
Cork Airport Business Park
Co. Cork
Ireland

t +353 1 808 2100 | e epssu@seai.ie
f +353 21 240 7987 | w www.seai.ie

Sustainable Energy Authority of Ireland
Wilton Park House
Wilton Place
Dublin 2
Ireland

t +353 1 808 2100 | e info@seai.ie
f +353 1 808 2002 | w www.seai.ie

To download a copy of the full report
Energy in Ireland 1990 – 2013, visit
www.seai.ie/energydata



The Sustainable Energy Authority of Ireland is partly financed by Ireland's EU Structural Funds Programme co-funded by the Irish Government and the European Union